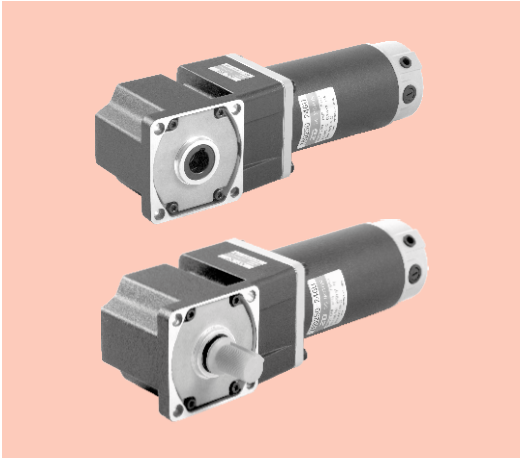


弧锥直角 SPIRAL BEVEL RIGHT ANGLE

■ 250W □104mm



■ 装有减速器时的容许转矩 Gear Motor-torque Table

- 减速器-中间减速器另售。
Gearhead and mid-gearbox can be sold separately.
- 减速器品号的□中为减速比的数值。
Enter the reduction ratio into the blank (□) within the model name.
 - 色表示分别从电动机轴轴端和减速器轴轴端看时，电机轴与输出轴转向反方向运转。其他则为同一方向运转。
 - 色 Indicates the opposite rotating direction between motor shaft and gearbox shaft while others are in same direction.
- 转速是以电动机的额定转速为基准除以减速比而算出来的数值。实际转速将随负载大小变化而比所示数值减少2%~20%左右。
The speed is calculated by dividing the motor's synchronous speed by the reduction ratio. The actual speed is 2%~20% less than the displayed value, depending on the size of the load.
- 希望以大于下表的减速比进行进一步减速时，可在电动机与减速器之间安装减速比为10的中间减速器。这时的容许转矩为60N·m。
To reduce the speed beyond the gear ratio in the table, attach a mid-gearbox (gear ratio:10) between the gearhead and motor. In that case, the permissible torque is 60N·m.

■ 容许力矩单位 Allowance Torque Unit: 上段 Upside (N.m) / 下段 Belowside (kgf.cm)

| 类型 Type 电动机/减速机 Motor/Gearhead | 减速比 Gear Ratio | 7.5 | 9 | 12.5 | 15 | 18 | 25 | 30 | 36 | 50 | 60 | 75 | 90 | 100 | 120 | 150 | 180 |
|--------------------------------------|-------------------|------|------|------|------|------|------|------|------|------|------|------|------|------|------|------|------|
| | 转速 Speed r/min | 400 | 333 | 240 | 200 | 166 | 120 | 100 | 83 | 60 | 50 | 40 | 33 | 30 | 25 | 20 | 16 |
| Z6D250-24GU-30S | 6GU□RC | 4.35 | 5.20 | 6.50 | 8.70 | 10.4 | 14.5 | 17.4 | 18.8 | 20.0 | 20.0 | 20.0 | 20.0 | 20.0 | 20.0 | 20.0 | 20.0 |
| | 6GU□RT | 44.4 | 53.0 | 66.3 | 88.7 | 106 | 148 | 177 | 192 | 200 | 200 | 200 | 200 | 200 | 200 | 200 | 200 |

■ 外形图 (单位: mm) Dimensions (Unit: mm)

