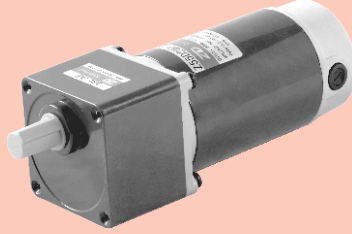


# 直流电动机 DC MOTORS

■ 250W □ 90mm



## 电机性能参数 Motor Performance Parameters

型号 Model	电压 Voltage	功率 Power	空载参数No-load Parameters		负载参数Load Parameters			电刷寿命 Brush Life	电机重量 Motor Weight
			转速Speed	电流Current	转速Speed	力矩Torque	电流Current		
	V	W	r/min	A	r/min	mN.m	A	H	kg
Z55D250-24 □	24	250	3400	3.0Max.	3000	796	16.0	2000	3.2
Z55D250-90 □	90	250	3300	1.2Max.	3000	796	4.20	2000	3.2
Z55D250-220 □	220	250	3300	0.9Max.	3000	796	2.20	2000	3.2

●电机电压、功率及转速可在配件尺寸等条件下根据客户要求定制。

Motor voltage, power and speed will be customized according to his requestment under the allowed circumstance of adoptable dimension.

## 种类 Type

● 电动机 Motor

机型 Type	型号Model		
	齿轮轴型 Pinion Shaft	圆轴型 Round Shaft	圆轴型 Round Shaft
导线型 Lead Wire Type	Z55D250-24GN	Z55D250-24A	Z55D250-24A1
	Z55D250-90GN	Z55D250-90A	Z55D250-90A1
	Z55D250-220GN	Z55D250-220A	Z55D250-220A1

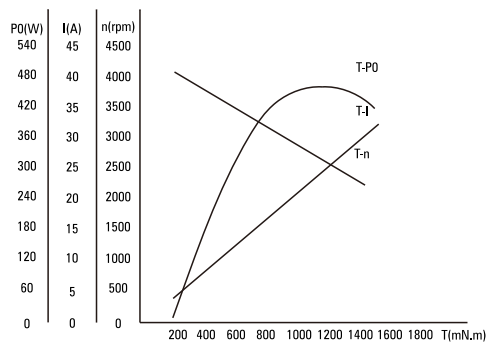
● 平行轴减速器 (另售) Parallel Shaft Gearhead (Sold Separately)

减速器种类 Gearhead Type	减速器型号 Gearhead Model	减速比 Gear Ratio
长寿命●低噪音 Long Life ● Low Noise	5GU□KB	3、3.6、5、6、7.5、9、10、12.5、15、18、20、25、30、36、40、50、60、75、90、100、120、150、180、200
	5GU10XK (中间减速器 Decimal Gearhead)	

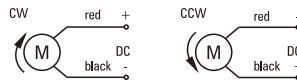
●减速器型号的□中为减速比的数值

Enter the gear ratio in the box (□) within the model name

● 电机特性曲线 Characteristic Curve Of Motor



● 电机接线图 Wiring Diagram Of Motor



●标准引出线长度: 300mm±10,型号: UL1015, 规格: AWG14; 电机引出线长度、型号在配件尺寸等条件允许的情况下可根据客户要求定制。

Stanclard length of lead wire: 300mm±10, model: UL1015, type: AWG14; lead wire length, model will be customised by dient requestment under allowed circumstance of adoptable dimension.

## ■ 装有减速器时的容许转矩 Gear Motor-Torque Table

- 减速器另售·中间减速器另售。

Gearheads are sold separately. Decimal gearheads are not available.

- 减速品型号的□中为减速比的数值。

Enter the gear ratio in the box (□) within the model name.

- □色表示与电动机同一方向运转，其他则为相反方向。

The colored background □ indicates the same rotating direction of the motor while the rotating direction of others are opposite.

- 转速是以电动机的额定转速为基准除以减速比而算出来的数值。实际转速将随负载大小变化而比所示数值减少2%~20%左右。

The speed is calculated by dividing the motor's synchronous speed by the gear ratio. The actual speed is 2%~20% less than the displayed value, depending on the size of the load.

- 希望以大于下表的减速比进行进一步减速时，可在电动机与减速机之间安装减速比为10的中间减速机。

这时的容许转矩为20N·m。

To reduce the speed beyond the gear ratio in the table, attach a decimal gearhead (gear ratio:10) between the gearhead and motor. In that case, the permissible torque is 20N·m.

## ■ 容许力矩单位 Allowance Torque Unit : 上段 Upside ( N.m ) /下段 Belowside ( kgf.cm )

型号 Type	减速比 Gear Ratio	3	3.6	5	6	7.5	9	10	12.5	15	18	20	25	30	36	40	50	60	75	90	100	120	150	180	200
Z55D250-24GU	转速 Speed r/min	1000	833	600	500	400	333	300	240	200	167	150	120	100	83	75	60	50	40	33	30	25	20	17	15
	5GU□KB	1.93	2.32	3.22	3.87	4.83	5.80	5.80	7.25	8.70	10.4	10.4	13.1	15.7	18.8	20.0	20.0	20.0	20.0	20.0	20.0	20.0	20.0	20.0	20.0
		19.0	22.7	31.6	37.9	47.4	56.9	56.9	71.1	85.3	102	102	128	154	184	200	200	200	200	200	200	200	200	200	200

## ■ 容许悬挂负载·容许轴向负载 To Allow The Hoisting Of The Load Allow Axial Load

电动机 (圆轴型) →P215页

Motor (Round shaft) →P215

减速机→P215页

Gearhead→P215

## ■ 减速机的容许负载惯性惯量 J Permissible Load Inertia J For Gearhead

→P215页→P215

### ● 圆轴型的转轴部分 Shaft Section Of Round Shaft Type

除重量及轴部外电动机外形与齿轮轴型相同。

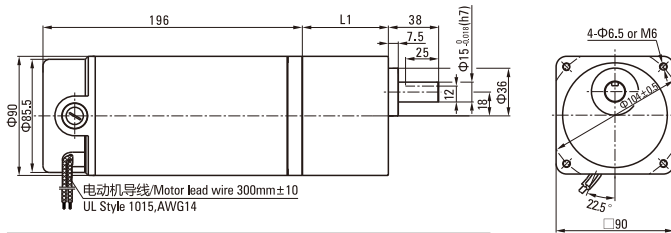
Excluding weight and the shaft section motor shape are the same as those of the pinion shaft type.

## ■ 外形图 (单位 mm) Dimensions (Unit mm)

减速器附有安装用螺丝 Mounting screws are included with gearhead.

### ● 导线型 Lead Wiring Type

重量 Weight : 电动机 Motor : 3.2kg 减速器 Gearhead : 1.5kg



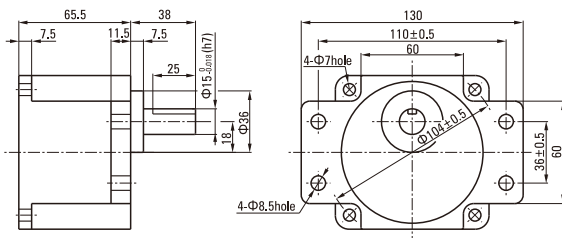
电动机型号 Motor Model	减速器型号 Gearhead Model	减速比 Gear Ratio	L1
Z55D250-24GU Z55D250-90GU Z55D250-220GU	5GU□KB	3~200	65.5

- 减速器型号的□中为减速比的数值 Enter the gear ratio in the box (□) within the model name

### ● 凸缘安装型减速器 Flange Mounting Reducer

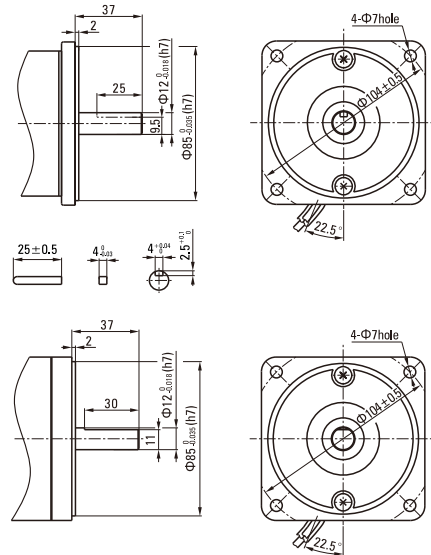
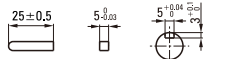
可安装在GU齿轮轴型上 Can be mounted on GU type gear shaft 5GU□K

重量 Weight: 1.5kg



### ● 键·键槽 (减速器附件)

Key·Keyway (The Key is Included With The Gearhead)



### ● 中间减速器 Decimal Gearhead

可安装在GU齿轮轴型上 Can be connected to GU pinion shaft type

电动机外形与齿轮轴型相同

5GU10X

重量 Weight : 0.651kg

